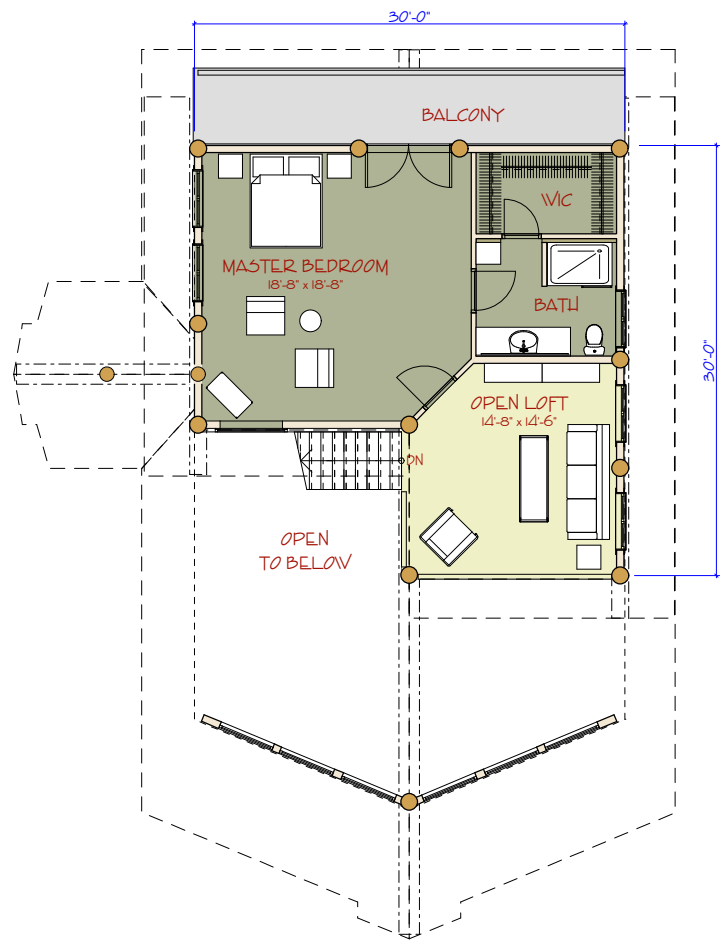


**MAIN FLOOR PLAN**



**LOFT FLOOR PLAN**

**LEAD OFFICE**

351 HODGSON ROAD  
 WILLIAMS LAKE, BC CANADA V2G 3P7  
 PHONE: 250-392-5577  
 FAX: 250-392-5581  
 TOLL FREE: 1-877-822-5647  
 www.pioneerloghomesofbc.com



**THE LOVELAND**

FIRST FLOOR: 1294 sq ft  
 LOFT FLOOR: 748 sq ft  
 TOTAL LIVING AREA: 2042 sq ft