

**OUR ANNUAL  
ULTIMATE  
CABIN GUIDE**

A HOME BUYER SPECIAL

# Cozy CABINS

**small retreats  
from 800 sq. ft.**

**LOCATION,  
LOCATION,  
LOCATION:**

**What to Know  
Before You Build**

**The Latest Trends in Cabin Design**

**12 Tips to Small-Home Success**

**15 Ways to Save Money and Move in Fast**

**Create a 4-Season Sanctuary in Your Home**



A rustic log cabin with a stone chimney and a wooden deck, nestled in a forest at dusk. The cabin is built with large, stacked logs and has a modern, low-pitched roof. A stone chimney rises from the left side. A wooden deck with a railing extends from the front of the cabin. The surrounding area is lush with greenery and tall trees. The sky is a deep blue, suggesting twilight. The overall atmosphere is serene and cozy.

# *rustic, meet modern*

Homeowner Scott Davis wanted to keep the landscaping in front of the cabin as natural and low-maintenance as possible. The couple opted for a gravel path and driveway and a yard seeded with grass and wildflowers. The steps down to the lake are made of logs taken from the property.

**One Wisconsin couple creates a vacation retreat that is the perfect marriage of contemporary and rustic design.**





Scott and Pam Davis didn't necessarily set out to build a cozy log cabin in the woods when they purchased three and a half acres on St. John's lake in Crandon, Wisconsin, back in 2005.

"At first we didn't know for sure that we wanted a log home," says Scott, who, along with his wife Pam and six-year-old daughter Quinn, live in Milwaukee. "Both Pam and my design sensibility leans a little more toward the modern aesthetic."

But, when the couple came across Pioneer Log Homes of British Columbia, which has a sales office in Wisconsin, they were awed by the sheer size of the Western red cedar logs, and the company's organic approach to building.

"We were really impressed with them as a company and the logs they provide," says Scott. "We both definitely have this more natural bent to us as well, so we decided it would be interesting to try to do a modern take on this vernacular form of a log cabin."

Scott, an architect, and Pam, an interior designer, worked closely with Pioneer

An antler chandelier (opposite), hangs over the upper-level seating area, drawing the eye toward the great room's sloping ceiling. "We loved the idea of an elk antler chandelier, but with a modern twist," says Scott. Artisans created the custom chandelier and replaced typical open bulbs with glass cylinders, creating clean lines and a more modern affect.

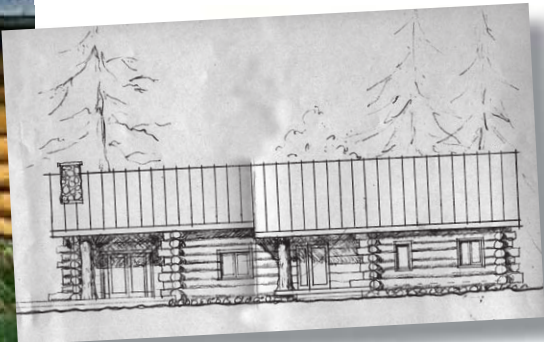
The fireplace (above), made of Mossy Mountain Stone from Tennessee, showcases a raw walnut mantle and a stained-concrete hearth with personal touches hidden within. "We gave the artist stones and a piece of hemlock from the site and he put that in the hearthstone," says Pam.



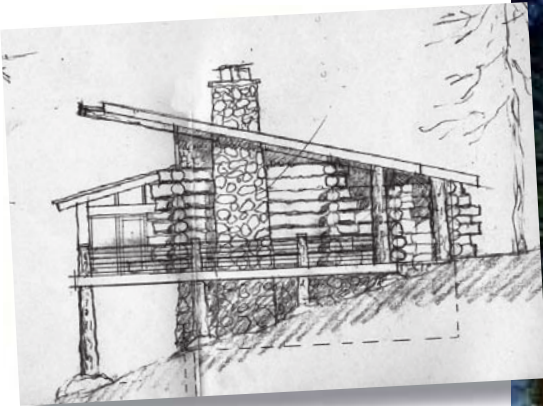
FROM DREAM TO REALITY



With an architect and an interior designer as your clients, you're sure to get some input on design. Scott and Pam Davis took it one step further, creating sketches of their dream cabin on cocktail napkins, which they brought with them to Pioneer Log Homes. As you can see, the similarities between the original vision and the finished product are staggering.



FRONT ELEVATION



SIDE ELEVATION



REAR ELEVATION



Butcher block and soapstone make up the kitchen island and breakfast bar. The cabinets, made of hickory, are stained a deep red to add some modern color. The cabinet panels, faced in mossy yellow birch bark add a textural element to the otherwise sleek surface.





Log Homes and general contractor Brian Luedtke to insure the perfect marriage of old and new. The result is a comfortable-yet-contemporary, log cabin that fits the family to a T.

### Form and Function

To celebrate the sloped property with gorgeous views of St. John's lake, Scott designed a walkout basement and an upper level that appears to be floating amid the many hemlock and birch trees that dot the property.

"As you approach the side that faces away from the lake, it seems pretty low and understated. Then as you step in the front door, the whole thing opens up," says Scott.

By mixing materials — logs, stone, stainless steel and glass — on the exterior of the home, the Davises achieved a contemporary look with varied textures. An added bonus, the house naturally appears to lighten as the eye is drawn upward.

"We have a stone base to this house, then these big heavy logs, and as you go up we have the metal panels. Then we have this floating roof with the glass between the top log and the roof," says Scott. "It just worked out really nice."

The inside of the home is equally reflective of a modern-meets-rustic aesthetic.

"Scott was inspired by Frank Lloyd Wright's prairie style," says John Leszcynski, president of Pioneer Log Homes Midwest. "It's a very organic style of architecture and it allows a connection between the interior space and nature."

True to the prairie style, the Davises designed an open plan with very little interruption between the kitchen, dining, and living spaces on the upper level. For more modern appeal, they added pops of red amid the natural wood tones, clean-lined furniture and steel art pieces that serve as fireplace mantle supports and stair rails.

The couple even got a little cheeky in their decor, adding an antler chandelier with modern glass cylinders instead of candlesticks, and antler lamps that grace the bedside tables. "You build a log home and there are some definite clichés out there you could run with. One of our goals was to have some restraint when it came to that," says Pam, who found the antler lamps at West Elm. "Those lamps are resin antlers, giving it that modern twist."



The living room provides a quiet retreat in the open floor plan. A ceiling-to-floor stone fireplace with a 6,000-pound hearthstone, rusted-steel ceiling panels and faux painted gable-end sheetrock beautifully balance the visual weight of the substantial post and beam trusses. Burnished leather, traditional Western upholstery and rugs, and well-chosen accessories complement the amber hue of the logs.





**Classic Sustainably**

The couple also wanted to make their vacation home eco-friendly.

The hand-peeled and sustainably harvested logs were a start. From there, the Davises installed cork flooring on the upper level and recycled metal on the exterior. The wrap-around deck is Ipe, a sustainably harvested tropical hardwood, and much of the furniture throughout is made from bamboo or other earth-friendly materials.

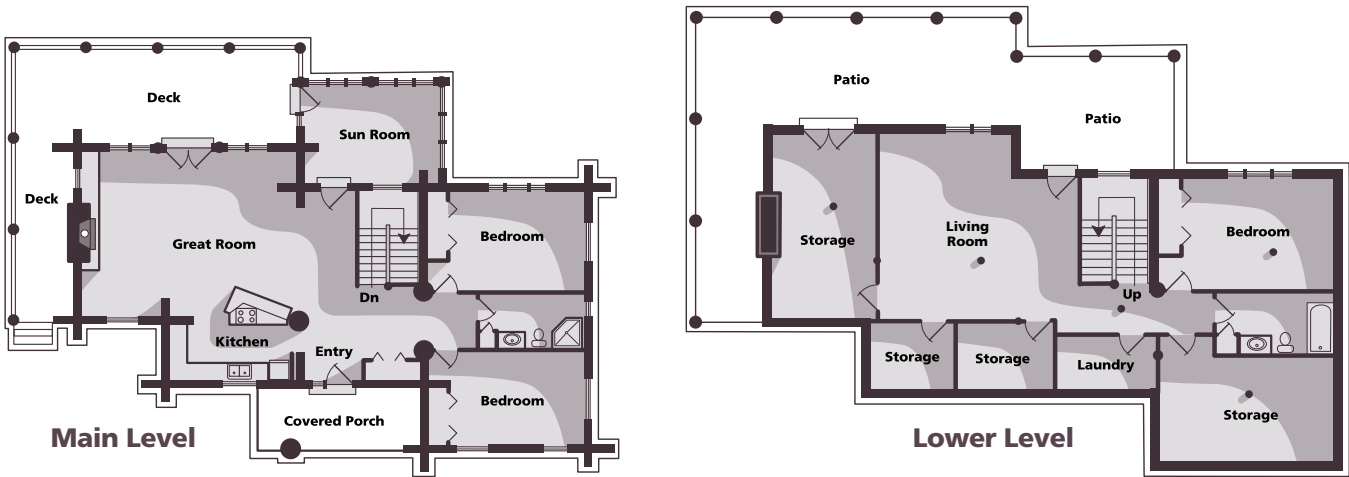
In addition, large windows allow for an abundance of natural light. “During the day we don’t have any lights on at all, which is great from a sustainability standpoint, and we haven’t changed any light bulbs at all since we’ve been here,” says Scott.

The Davis home’s lower level features stained-concrete floors and distinctly modern lines and decor. The primary seating area is defined by a cherry veneer structure with joints patterned in a Mondrian style. An abstract art piece, designed by Scott to close off the staircase, is made up of Hemlock branches like those found on the property.

The couple also reached out to many Wisconsin vendors to create custom art pieces and design elements, like the custom concrete hearth by Wausau artist H3 Concrete Design, and recycled-metal pendant lights in the kitchen by Woggon, LLC in Shorewood.

In all, the homeowners, who make it up to the cabin two to three times a month, love everything about their rustic-meets-contemporary retreat. Especially the fact that this design is all their own. “This whole house has been

percolating in our minds for some time, whether we knew it or not,” says Pam. “This house is a marriage of items we’d [have] loved to use in our previous projects, but either clients’ needs or budget wouldn’t allow. It was really fun to be able to bring together a lot of cool things we always wanted to use.”



Pioneer Log Homes specializes in creating character in the corners, as seen in this unique corner system on the Davis’ deck. “Cedar has a really cool natural taper right at the base,” says Pioneer Log Homes Midwest’s John Leszczynski. “Most loggers consider that waste, but we cut that down right at the ground and that whole entire tapered flare [is used] in the houses and in the corner systems.”

**RESOURCES**

- Square footage:** 3,200  
**Bedrooms:** 3  
**Bathrooms:** 2  
**Log species:** Western red cedar  
**Bathroom faucets:** Kohler, Kohler, WI (800-456-4537; [kohler.com](http://kohler.com))  
**Cabinetry; interior doors:** Exclusive Millwork, Brookfield, WI (414-975-9661; [wisconsinmillwork.com](http://wisconsinmillwork.com))  
**Dealer:** Pioneer Log Homes Midwest, Grafton, WI (866-255-6148; [pioneerloghomesmidwest.com](http://pioneerloghomesmidwest.com))  
**Deck; handrails:** Midwest Lumber, Stillwater, MN (651-439-5051; [midwestlumberinc.com](http://midwestlumberinc.com))  
**Dishwasher; microwave; refrigerator:** GE (800-848-7620; [geappliances.com](http://geappliances.com))  
**Exterior doors; windows:** MasterCraft Windows & Doors, Kamloops, BC (250-374-4683; [mastercraftwindowsdoors.com](http://mastercraftwindowsdoors.com))  
**Farm sink:** Rohl, Irvine, CA (800-777-9762; [rohlhome.com](http://rohlhome.com))  
**Flooring (bathroom, kitchen):** PetraSlate, Broomfield, CO (800-373-9595; [petraslate.com](http://petraslate.com))  
**Flooring (great room):** Duro Design, Laval, QC (450-978-3403; [duro-design.com](http://duro-design.com))  
**General contractor:** Brian Luedtke (715-241-9042)  
**Hardware; pulls:** Rocky Mountain Hardware, Hailey, ID (888-788-2013; [rockymountainhardware.com](http://rockymountainhardware.com))  
**Log supplier:** Pioneer Log Homes of British Columbia, Williams Lake, BC (877-822-5647; [pioneerloghomesofbc.com](http://pioneerloghomesofbc.com))  
**Mantel:** Log Style Mantels ([logstylemantels.com](http://logstylemantels.com))  
**Masonry:** Halquist Stone, Sussex, WI (262-246-9000; [halquiststone.com](http://halquiststone.com))  
**Oven; range:** Dacor, San Francisco, CA (800-793-0093; [dacor.com](http://dacor.com))  
**Roofing:** Kulp’s of Stratford, LLC, Stratford, WI (715-687-3368; [kulproof.com](http://kulproof.com))  
**Stain:** Timber Pro, Portland, OR (888-888-6095; [timberprocoatings.com](http://timberprocoatings.com))