

MAIN FLOOR PLAN

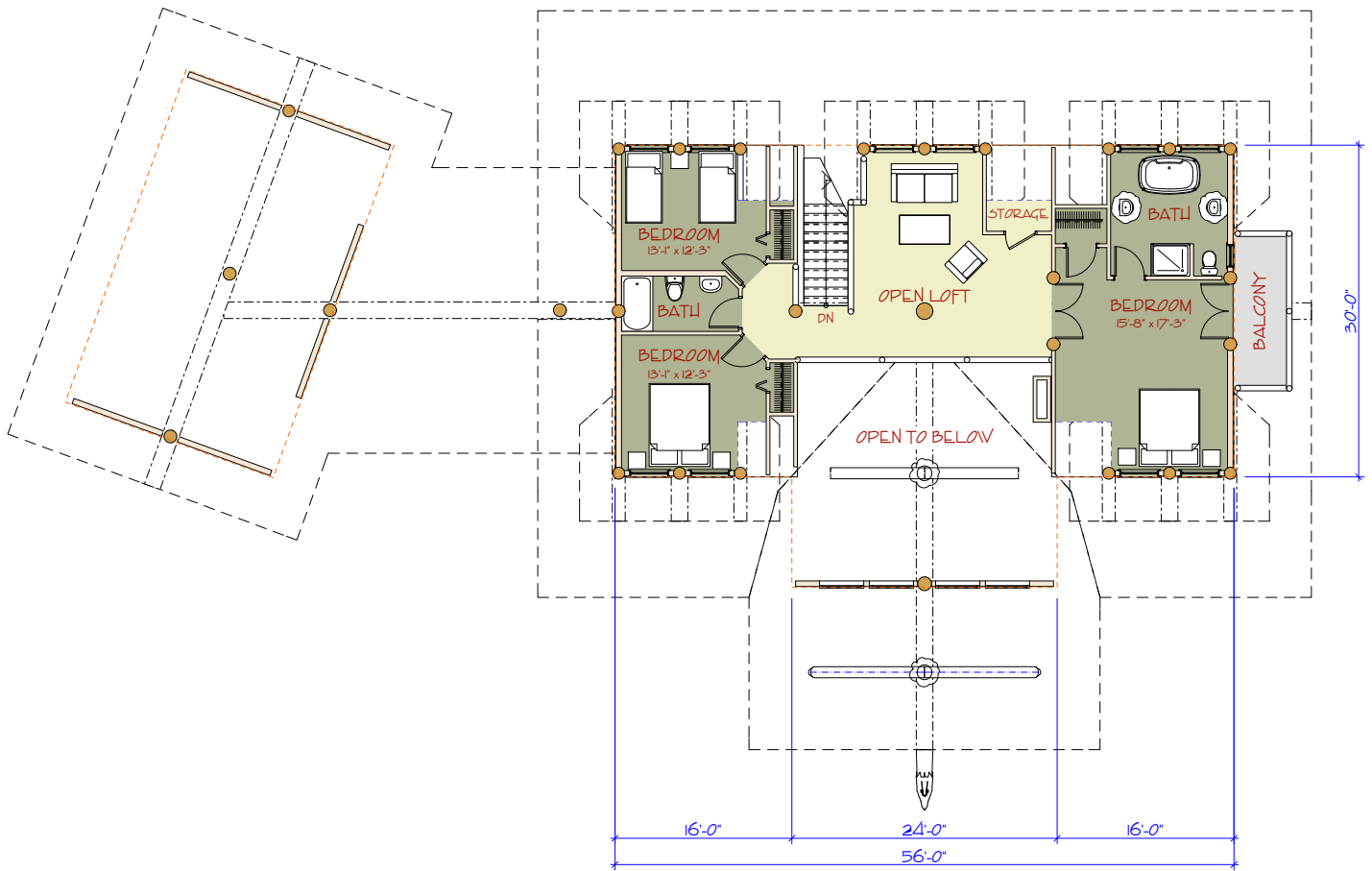
HEAD OFFICE

351 HODGSON ROAD
 WILLIAMS LAKE, BC CANADA V2G 3P7
 PHONE: 250-392-5577
 FAX: 250-392-5581
 TOLL FREE: 1-877-822-5647
www.pioneerloghomesofbc.com



THE MARION RIDGE

FIRST FLOOR: 1,920 sq ft
 LOFT FLOOR: 1,210 sq ft
 TOTAL LIVING AREA: 3,130 sq ft
 GARAGE: 640 sq ft



LOFT FLOOR PLAN

<p>HEAD OFFICE 351 HODGSON ROAD WILLIAMS LAKE, BC CANADA V2G 3P7 PHONE: 250-392-5577 FAX: 250-392-5581 TOLL FREE: 1-877-822-5647 www.pioneerloghomesofbc.com</p>		<p>THE MARION RIDGE FIRST FLOOR: 1,920 sq ft LOFT FLOOR: 1,210 sq ft TOTAL LIVING AREA: 3,130 sq ft GARAGE: 640 sq ft</p>
--	--	--