

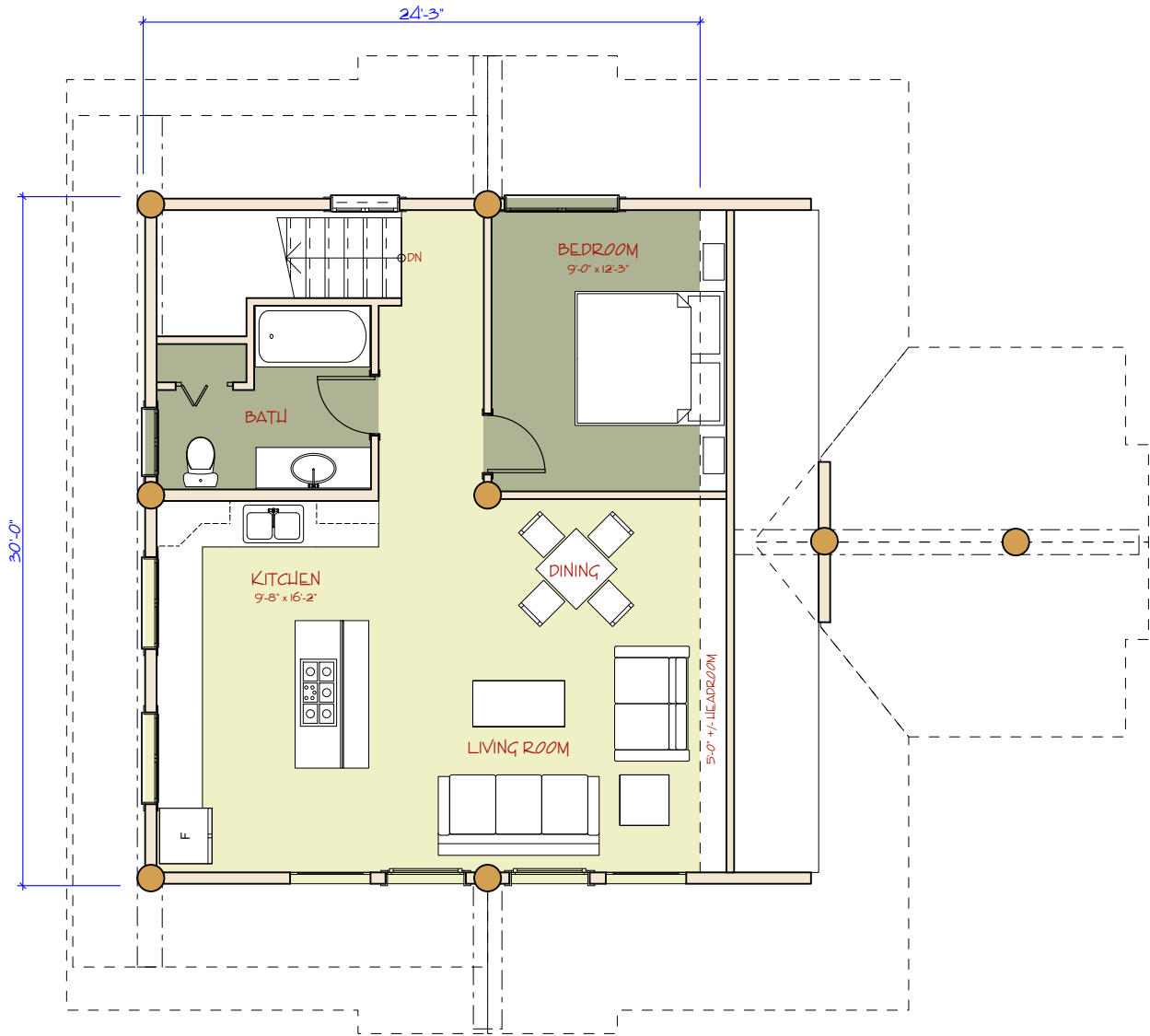
HEAD OFFICE

351 WOODSON ROAD
 WILLIAMS LAKE, BC CANADA V2G 3P7
 PHONE: 250-392-5577
 FAX: 250-392-5581
 TOLL FREE: 1-877-822-5647
 www.pioneerloghomesofbc.com



MEADOWVIEW SUITE

GARAGE LEVEL: 900 sq ft
 LOFT FLOOR: 665 sq ft
 TOTAL AREA: 1,565 sq ft



LOFT FLOOR PLAN

HEAD OFFICE

351 WOODSON ROAD
 WILLIAMS LAKE, BC CANADA V2G 3P7
 PHONE: 250-392-5577
 FAX: 250-392-5581
 TOLL FREE: 1-877-822-5647
 www.pioneerloghomesofbc.com



MEADOWVIEW SUITE

GARAGE LEVEL: 900 sq ft
 LOFT FLOOR: 665 sq ft
 TOTAL AREA: 1,565 sq ft