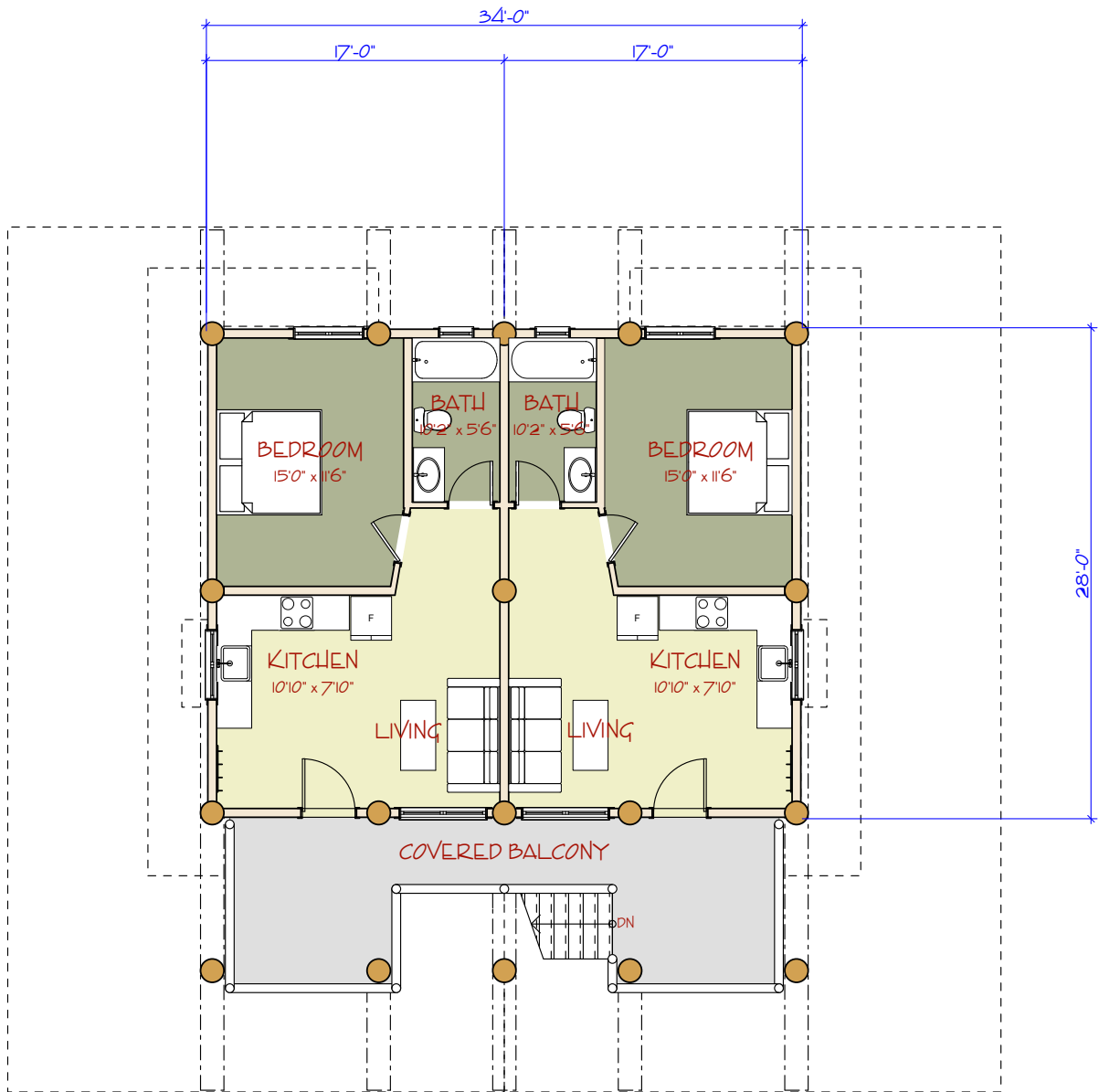


MAIN FLOOR PLAN

<p>HEAD OFFICE 1527 CARIBOO HWY 97 S WILLIAMS LAKE, BC CANADA V2G 2V3 PHONE: 250-392-5577 TOLL FREE: 1-877-822-5647 www.pioneerloghomesofbc.com</p>		<p>THE STELLAR APLEX FIRST FLOOR: 952 sq ft LOFT FLOOR: 952 sq ft TOTAL: 1904 sq ft</p>
--	--	--



LOFT FLOOR PLAN

HEAD OFFICE

1527 CARIBOO HWY 97 S
 WILLIAMS LAKE, BC CANADA V2G 2V3
 PHONE: 250-392-5577
 TOLL FREE: 1-877-822-5647
www.pioneerloghomesofbc.com



THE STELLAR APLEX

FIRST FLOOR: 952 sq ft
 LOFT FLOOR: 952 sq ft

TOTAL: 1904 sq ft